



Being green today will protect tomorrow



VANTAGE® CS

Clip On Coping System



A clip on coping system



The Vantage® suite of precision engineered system based solutions has been painstakingly crafted together to bring to market an industry leading range of façade systems for use in the construction industry.

Every Vantage® system is equally suitable for use in new build construction projects or refurbishment works, allowing designers and specifiers the possibility to achieve truly stunning results on new and old buildings alike.

STYLE AND SIMPLICITY

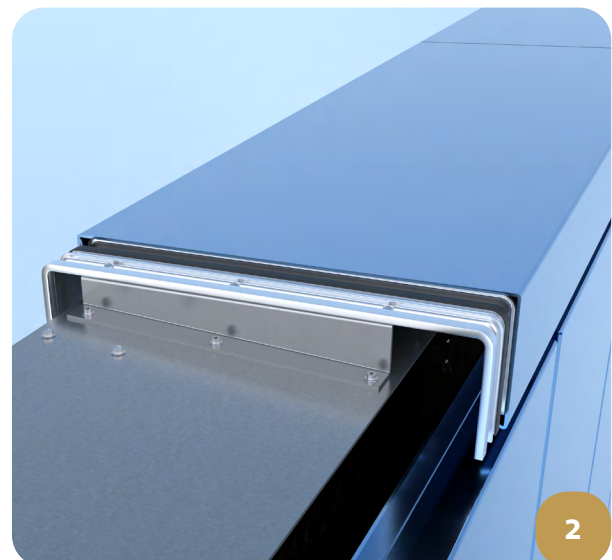
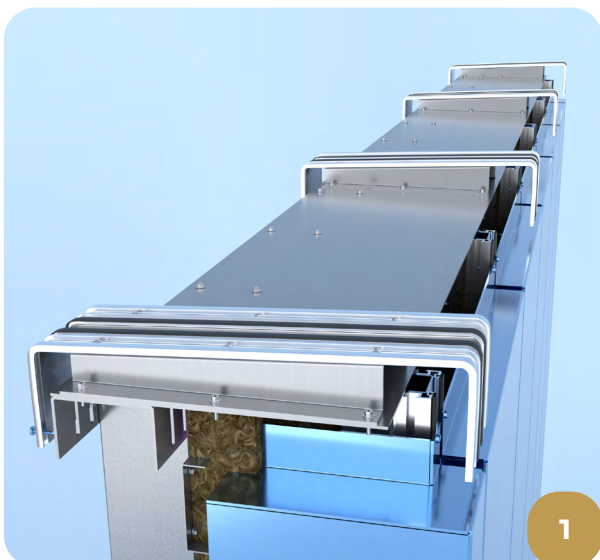
Decorative, structurally strong and, most importantly watertight, This Vantage®-Clip-On Coping system is available in a comprehensive range of materials and finishes to compliment or contrast with the overall building aesthetics.

No fixings pierce the capping top which removes the risk of leakage from defected installed screws; specially designed grooves on the robust extruded alloy bracket secures the rubber gasket that ensures a snug watertight antidrum fit.

This system is quick and easy to install with the advantage of being able to fit from the roof, reducing access costs on your project.

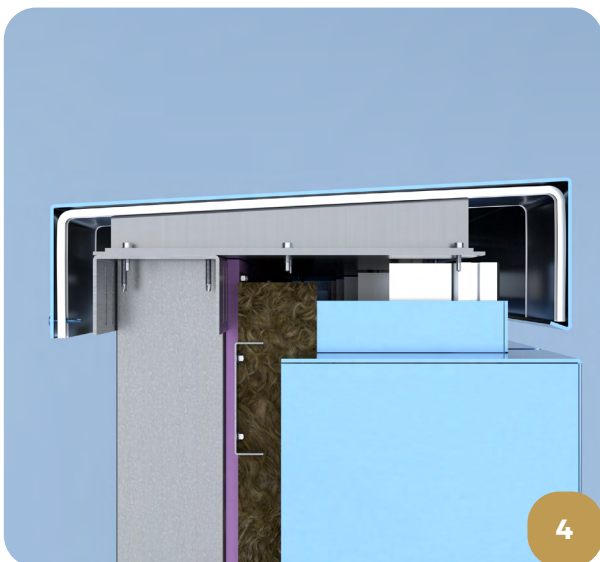
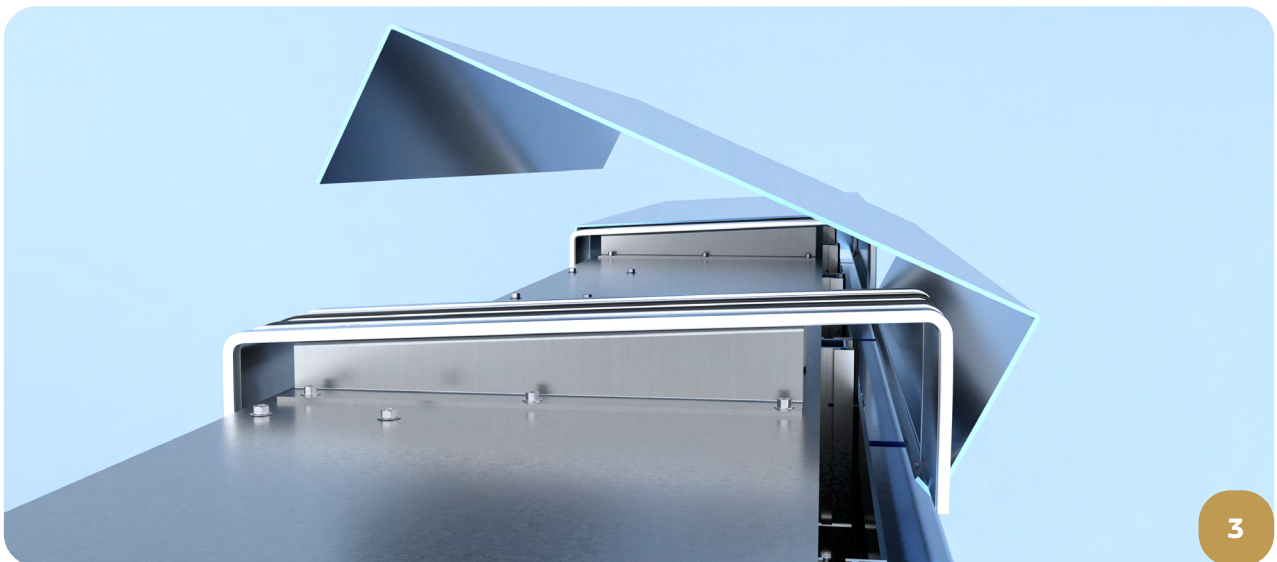
A suite of ancillary items, including stop ends, corner pieces, T-sections, weatherproofed support brackets, junctions and up stands complete the system.

The design team can also work with you to produce bespoke feature components to bring real individuality to your project.



SYSTEM FEATURES

- The coping is fixed at the rear eliminating the need to pierce the top of the coping as seen with conventional coping systems.
- Our fully engineered extruded coping bracket is multifunctional; facilitating water egress, provides anti-drumming and removes the need for butt straps.
- Tailor made to fit a variety of width walls.
- Fully supported by structural engineering calculations upon request.
- No Visible fixings in the front face of the coping.
- Ease and speed of install.





For further information contact:



BTS Facades and Fabrications

Unit 7, Woodham Road,
Aycliffe Business Park,
Newton Aycliffe, County
Durham, DL5 6HT
Tel. (01388) 816883
mail@btsfabrications.co.uk