

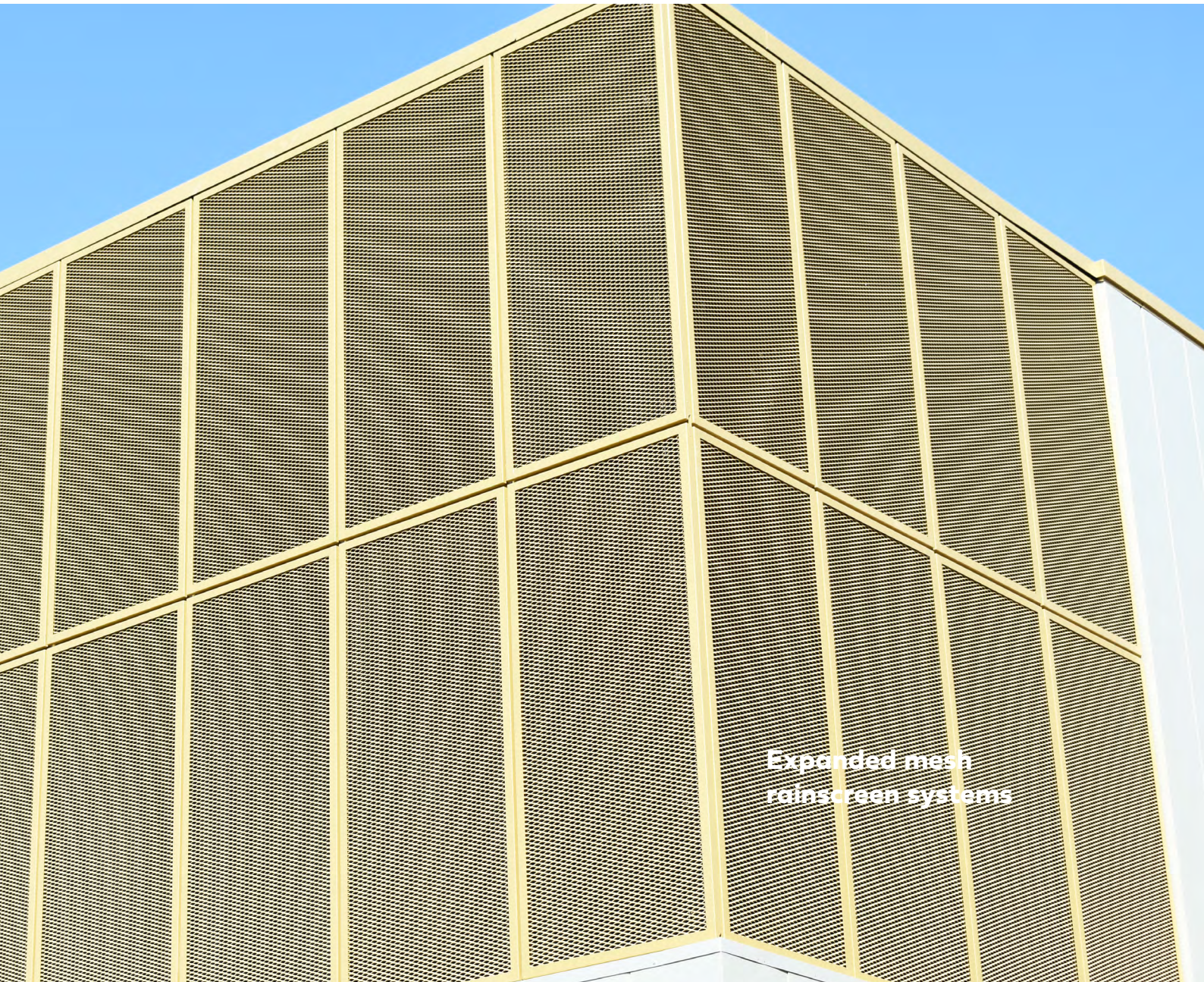


Being green today will protect tomorrow



VANTAGE® MESH

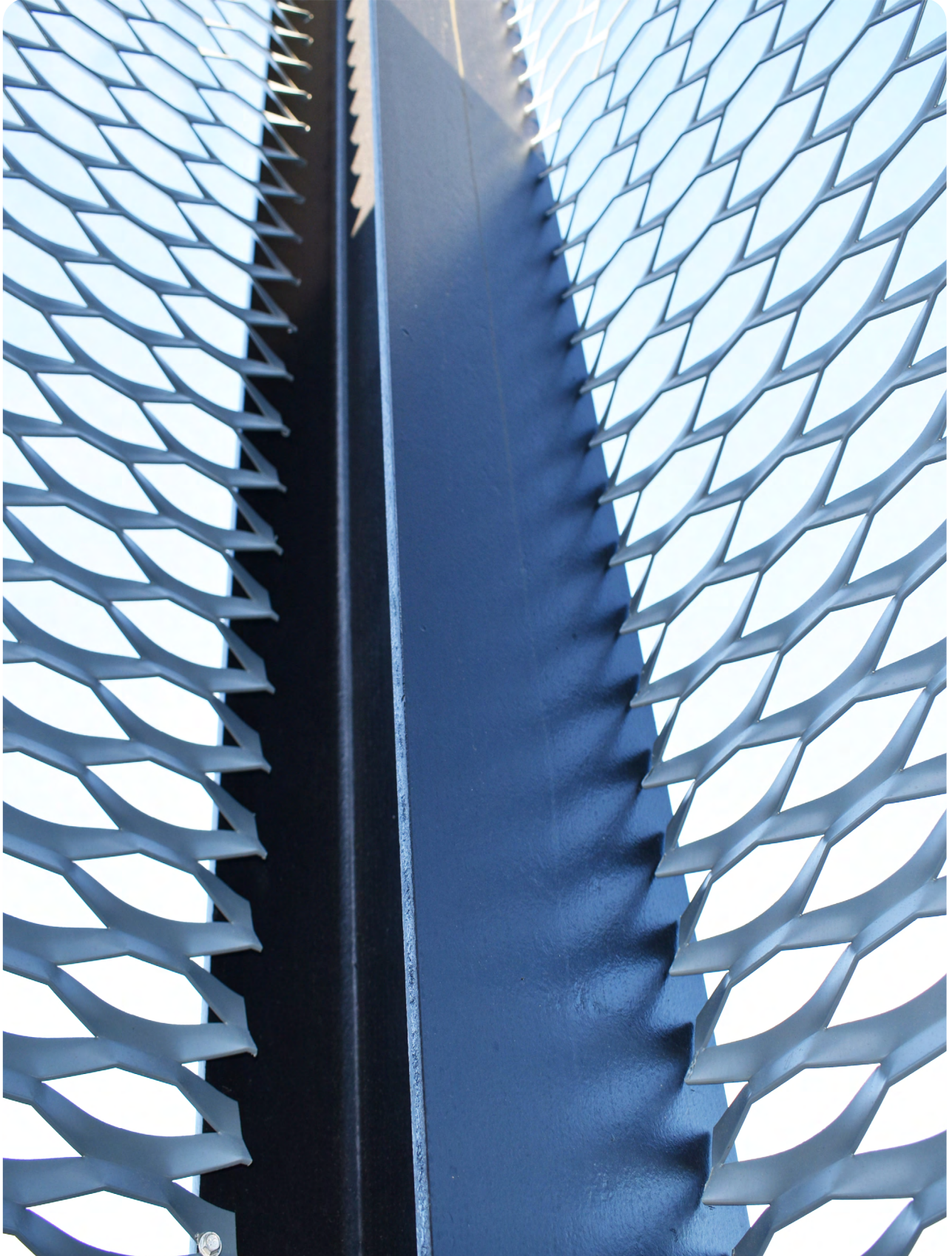
Vantage® Site Assembled And Framed Mesh Systems



Expanded mesh
rainscreen systems

VANTAGE[®] EMSA

Site assembled expanded mesh rainscreen system





THE PERFECT COLLABORATION

BTS Facades and Fabrications are an established manufacturer of rainscreen cladding and we have joined forces with The Expanded Metal Company to create two innovative new expanded mesh systems for architectural design, which can protect buildings and update their look through its pioneering design and simple installation.

Our Vantage® EMSA systems offers a fully impact tested subgrid to CWCT standards when using the Athens expanded mesh and Nvelopes F2F system. Making Athens EMSA a robust and aesthetically appealing and robust option for store fronts and plant rooms. Vantage EMSA is also available using the Prague and Dublin expanded meshes. All meshes are available in a vast array of PPC or Anodised Finishes.

ENGINEERING EXCELLENCE IN DESIGN

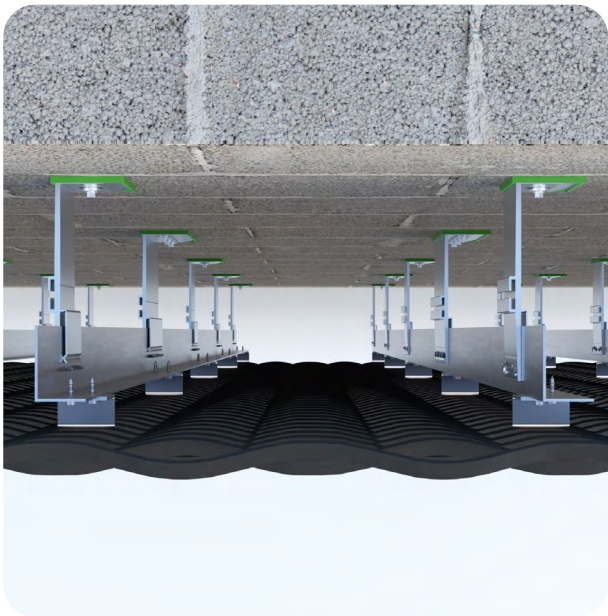
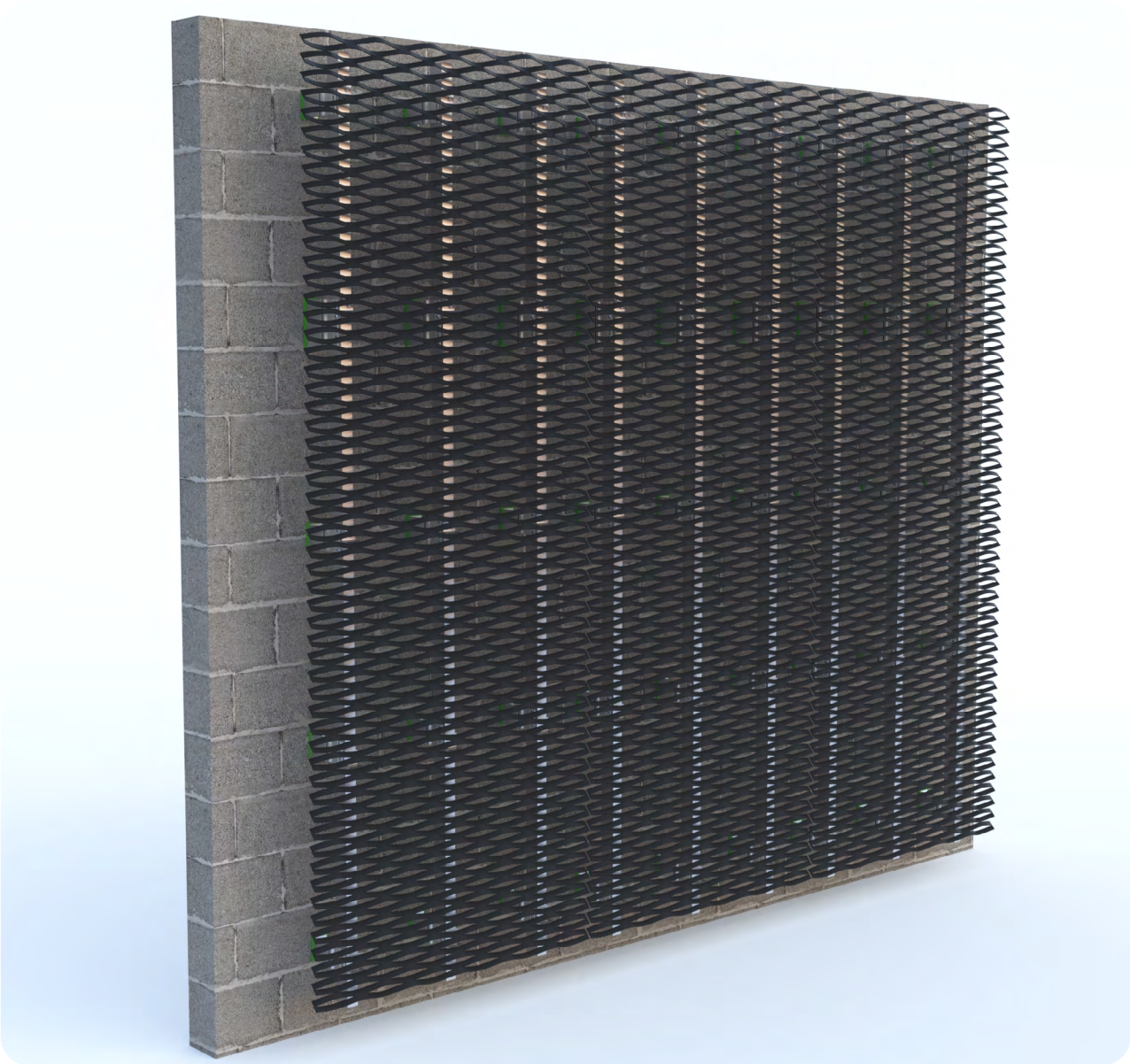
Our Vantage® EMSA system allows mesh sheets to be installed onto a building or structure and includes an almost concealed an unobtrusive subgrid giving the expanded mesh a continuous visual effect.

The EMSA system is available with two backing structure options Nvelopes F2F system and Nvelopes NV1 system as below.

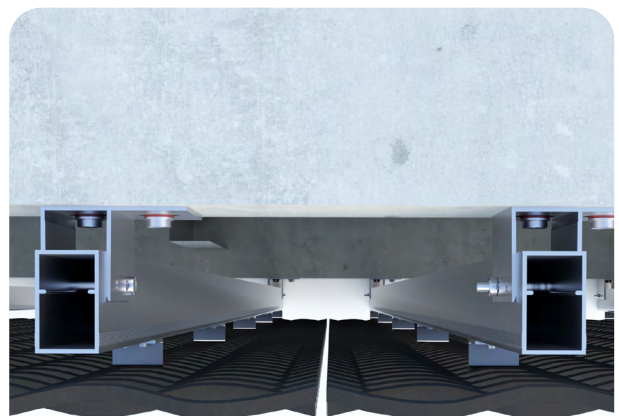
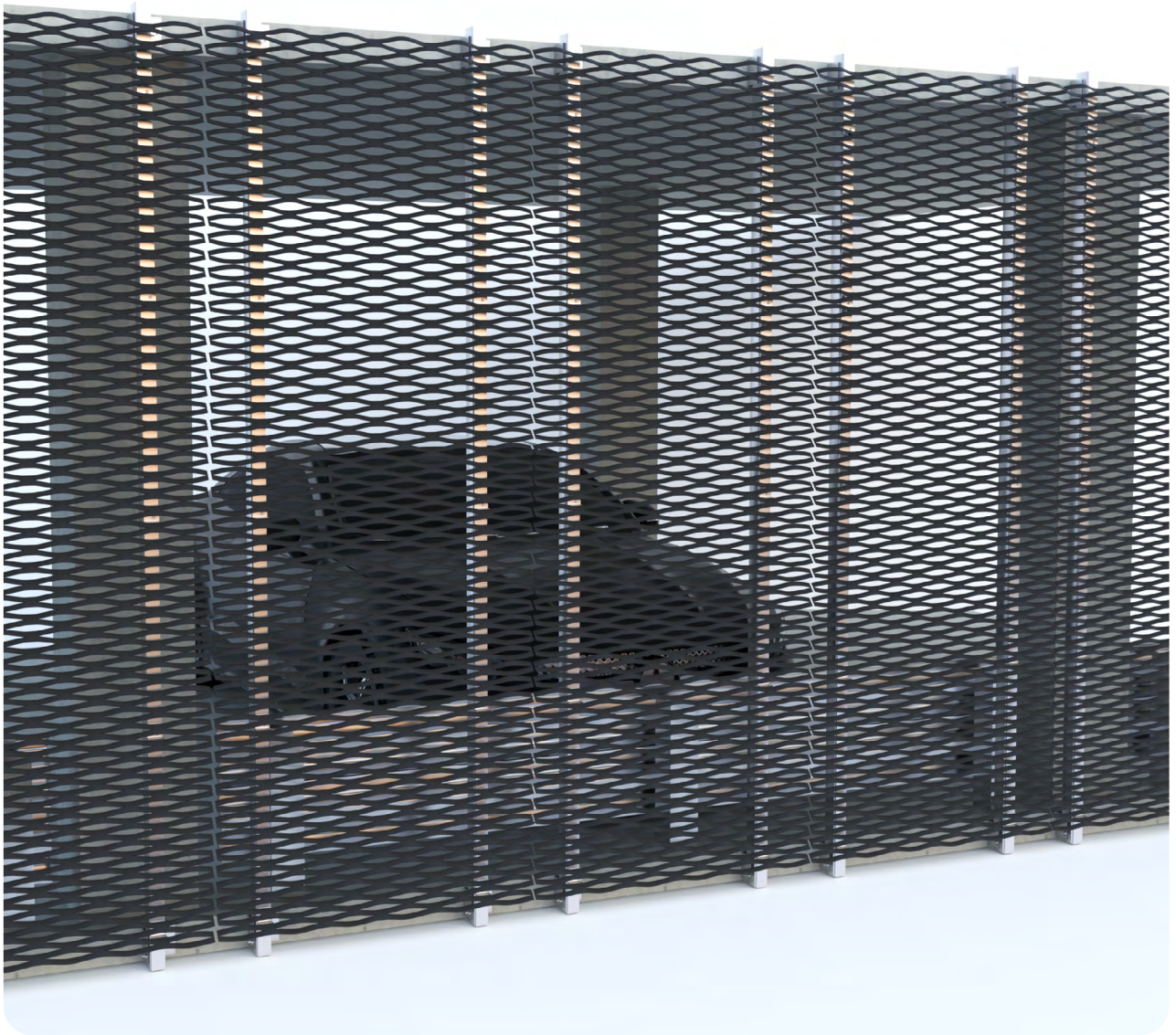
The F2F system also offers a unique slab to slab application making it the ideal choice for car parks and open structures where larger spans are required.



VANTAGE® EMSA - NVELOPE NV1 SYSTEM OPTION



VANTAGE® EMSA - NVELOPE F2F SYSTEM OPTION



VANTAGE® EMSA - EXPANDED MESH OPTIONS

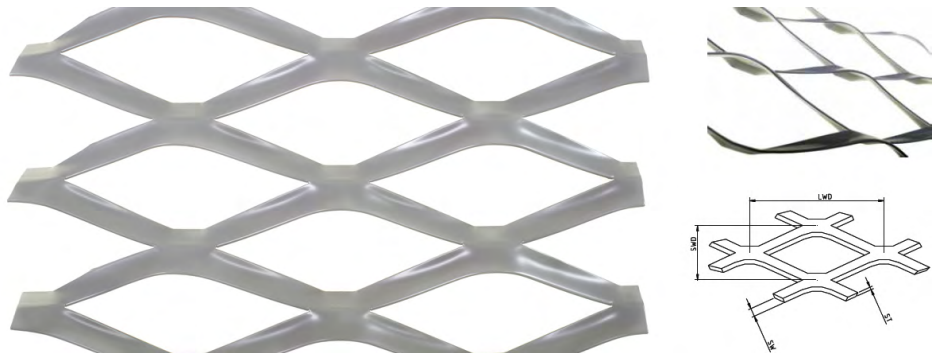
ATHENS

Material - Aluminium
Material Thickness - 3mm
Long Way (LWD) - 150
Short Way (SWD) - 52
Strand Width (SW) - 20
Weight - 6.25kg/m²
Overall Thickness - 24
Open Area - 23%



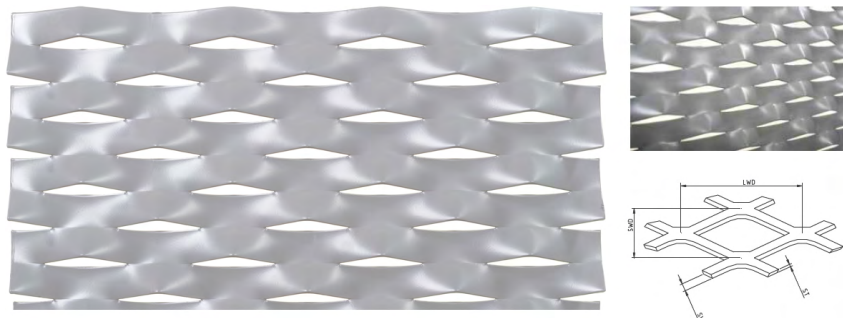
PRAGUE

Material - Aluminium
Material Thickness - 3mm
Long Way (LWD) - 300
Short Way (SWD) - 120
Strand Width (SW) - 30
Weight - 4.07kg/m²
Overall Thickness - 37
Open Area - 40%



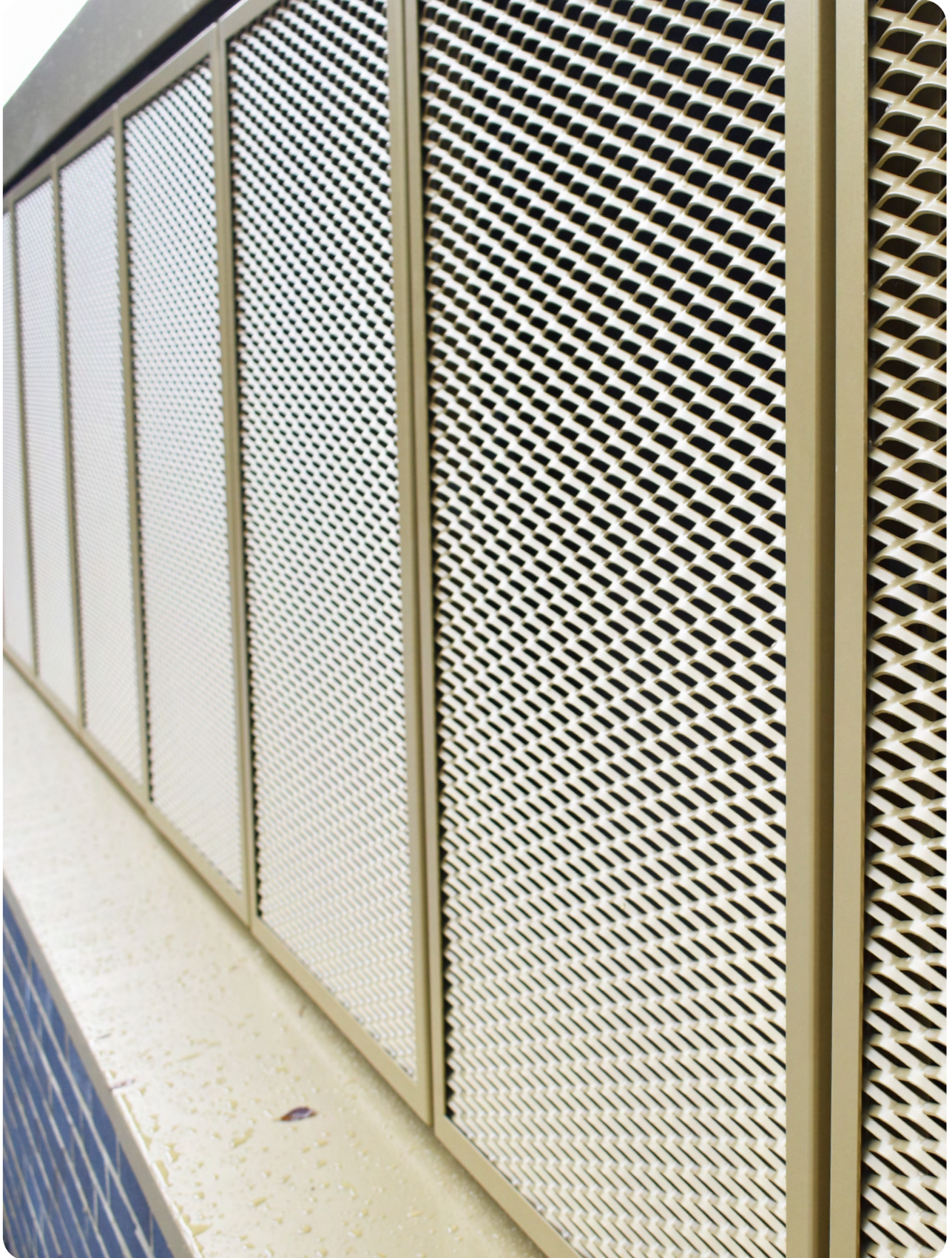
DUBLIN

Material - Aluminium
Material Thickness - 3mm
Long Way (LWD) - 100
Short Way (SWD) - 34
Strand Width (SW) - 15
Weight - 7.17kg/m²
Overall Thickness - 10
Open Area - 12%



VANTAGE[®] EMF

Framed expanded mesh rainscreen system





THE PERFECT COLLABORATION

One of our new additions to the Vantage® range is Vantage® EMF our framed expanded mesh system, which is the first of its kind in the UK

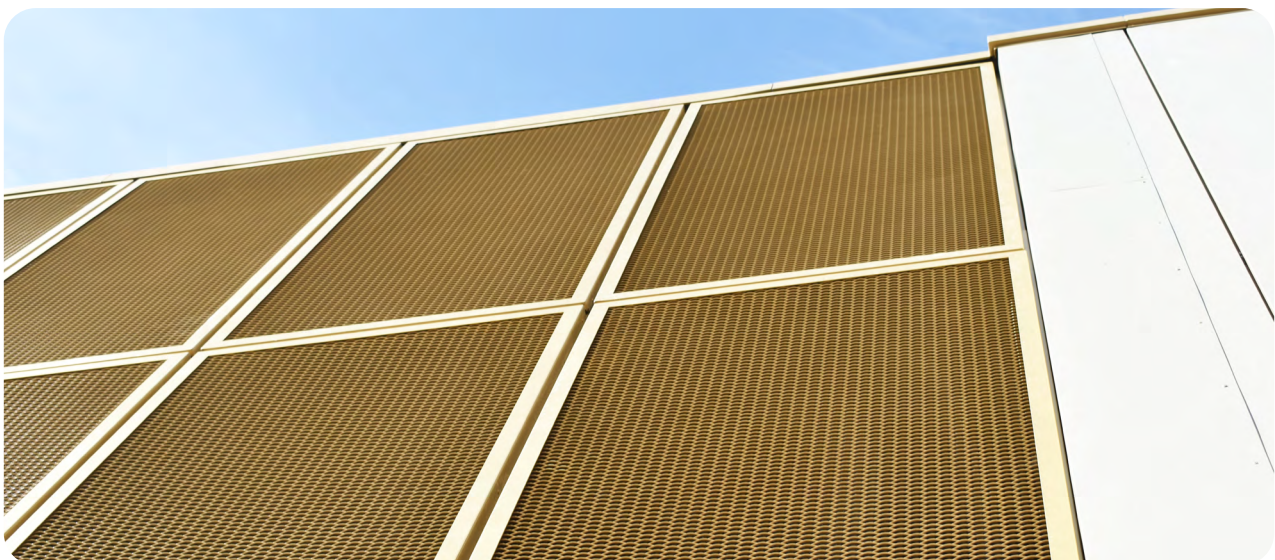
Our Vantage® EMF offers a fully impact tested system to CWCT standards when using the Madrid and Bilbao expanded meshes. Vantage EMF is also available using the Moscow, Berlin, Vienna, Paris and Dublin variants. All meshes are available in a vast array of PPC and anodised options.

The Vantage® EMF Framed expanded mesh system incorporates BTS Facades and Fabrications unique hook on frame encapsulating the edges of expanded mesh sheets.

ENGINEERING EXCELLENCE IN DESIGN

The framing gives the mesh a stunning visual effect and can be used in a variety of vertical architectural facades applications with the options of having a backing panel also.

The system utilises existing technology from our Vantage® SF rainscreen system and allows the expanded mesh to be secret fixed and used in conjunction with our Vantage® SF panels for a unique and custom facade appearance.



VANTAGE® EMF

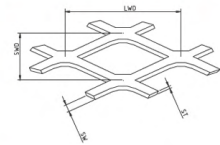
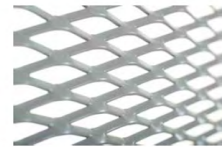
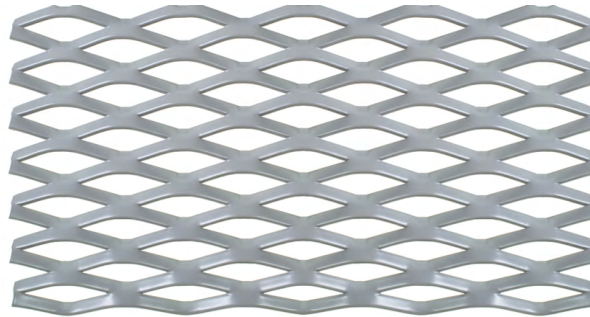




VANTAGE® EMF - EXPANDED MESH OPTIONS

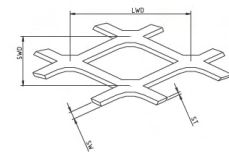
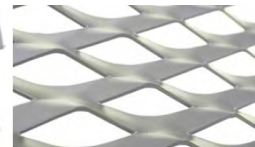
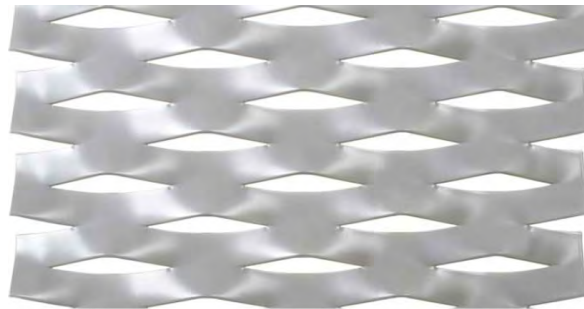
MADRID

Material - Aluminium
 Material Thickness - 3mm
 Long Way (LWD) - 62
 Short Way (SWD) - 23
 Strand Width (SW) - 7
 Weight - 4.95kg/m²
 Overall Thickness - 12
 Open Area - 39%



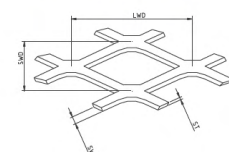
BILBAO

Material - Aluminium
 Material Thickness - 3mm
 Long Way (LWD) - 115
 Short Way (SWD) - 48
 Strand Width (SW) - 20
 Weight - 6.78kg/m²
 Overall Thickness - 13
 Open Area - 17%



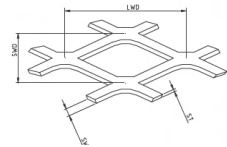
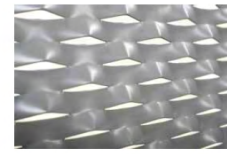
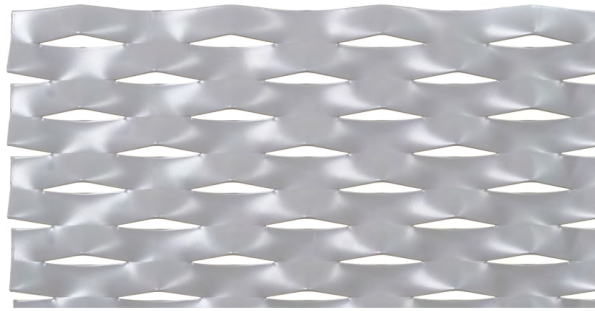
MOSCOW

Material - Aluminium
 Material Thickness - 3mm
 Long Way (LWD) - 76
 Short Way (SWD) - 31
 Strand Width (SW) - 11
 Weight - 5.77kg/m²
 Overall Thickness - 15
 Open Area - 29%



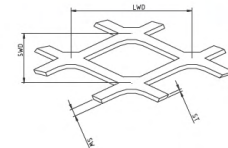
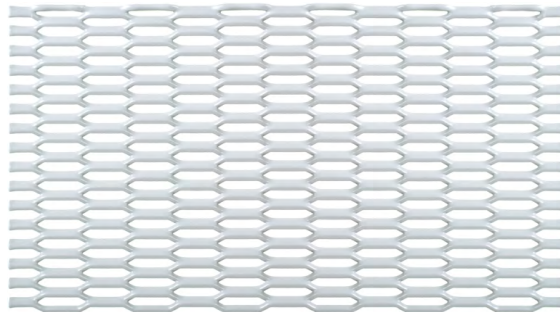
DUBLIN

Material - Aluminium
Material Thickness - 3mm
Long Way (LWD) - 100
Short Way (SWD) - 34
Strand Width (SW) - 15
Weight - 7.17kg/m²
Overall Thickness - 10
Open Area - 12%



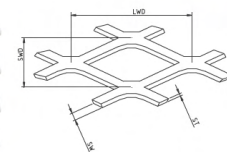
VIENNA

Material - Aluminium
Material Thickness - 3mm
Long Way (LWD) - 44
Short Way (SWD) - 8.7
Strand Width (SW) - 2.5
Weight - 6.78kg/m²
Overall Thickness - 6
Open Area - 43%



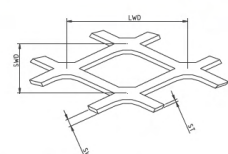
BERLIN

Material - Aluminium
Material Thickness - 3mm
Long Way (LWD) - 42
Short Way (SWD) - 16
Strand Width (SW) - 6
Weight - 6.1kg/m²
Overall Thickness - 7
Open Area - 25%



PARIS

Material - Aluminium
Material Thickness - 3mm
Long Way (LWD) - 44
Short Way (SWD) - 12
Strand Width (SW) - 5
Weight - 6.78kg/m²
Overall Thickness - 7
Open Area - 16%





BTS
Facades &
Fabrications

VANTAGE[®]
Rainscreen systems

For further information contact:



BTS Facades and Fabrications

Unit 7, Woodham Road,
Aycliffe Business Park,
Newton Aycliffe, County
Durham, DL5 6HT
Tel. (01388) 816883
mail@btsfabrications.co.uk